

Howden MK5E/WCV204/16536 MK5E/WCV204/16536 package

Specifications

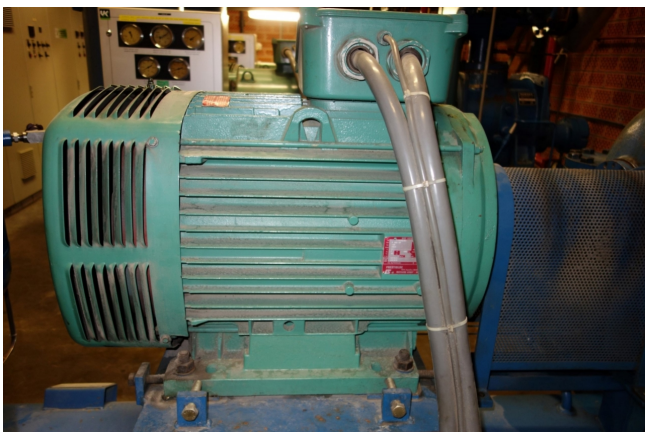
Brand	Howden
Type	MK5E/WCV204/16536 MK5E/WCV204/16536 package
Refrigerant	Freon
kW at -10°C/+40°C	1220
Electromotor Specs	250 kW at 2950 RPM and 250 kW at 2960 RPM
m3 / h	1220
Remarks	# 1220 based on -10°C/35°C
Package / Rack	✓
Sizes	4050x1300x2350 mm (LxWxH)
Stock	2

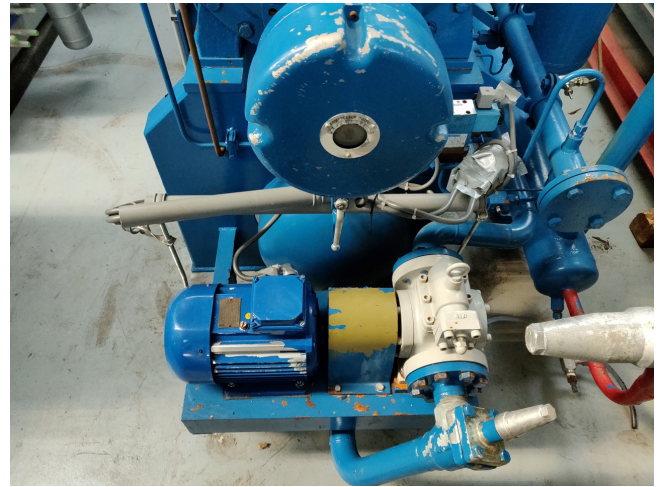


Description

Used Howden MK5E/WCV204/16536 MK5E/WCV204/16536 package

Used Howden MK5E/WCV204/16536/1780 screw compressor. Including a Electromotor Leroy Somer 250 kW at 2950 RPM and MK5E/WCV204/16536/1781 screw compressor Including a Electromotor Leroy Somer 250 kW at 2960 RPM Oil Separator and Control Panel. * Why choose for HOSBV? Were not only the largest used refrigeration specialist in Europe, but also, we deliver all equipment including an extensive test, warranty and industrial cleaning. *Optional we can also perform a new paint job and arrange the logistics.





SECTION 2 – DESCRIPTION



2.1 THE WRV/WRVI COMPRESSOR

The Howden WRV/WRVI Oil Injected Compressor is a positive displacement, capacity controlled, oil flooded, rotary machine.

A feature of the WRVI compressor range is the facility to adjust the volume ratio by altering the size of the discharge port to obtain the desired ratio in the range 2.2:1 to 5.0:1.

The WRVI compressors are supplied with two oil injection ports on the side of the main casing. If no oil injection is required due to the duty then it is not necessary to pipe up to these connections and the plugs can remain fitted to the casing. Older compressor models, which had no oil injection, were identified as WCV units on the name plates.

Note: The plugged WRVI is the direct replacement for a WCV unit.

The accurately machined helical rotors are called Male and Female. The Male (driving) rotor has four lobes that mesh with six flutes in the Female (driven) rotor, both rotors having the same outside diameter. Each rotor is supported by two plain white metal thick walled journal bearings fitted adjacent to the compression chamber.

As the lubricating oil is at discharge pressure plus 2.1 bar (30 psi) for standard range compressors and at 3.1 bar (45 psi) for the 'H' designated compressors, the bearings act as shaft seals within the compressor.



largest capacity oil injected screw compressors.

WRV 204 range key performance parameters

Max pressure	24 bar g	348 psi g
Min flow	406 sm ³ /hr	239 CFM
Max flow	2013 sm ³ /hr	1185 CFM
Min speed	1500 rpm	
Max speed	4500 rpm	
Max power	766 kW	1028 hp

WRV 204 illustrative performance

WRV 204 variants	Speed rpm	Swept volume m ³ /hr	Nominal capacities in kW for R117			Dimensions in mm basic unit L x W x H	Weight (basic direct drive unit) kg / lbs	Sound pressure level dBS
			High stage -10/+35°C	Booster -40/-10°C	With economiser -40/+35°C			
WRV204/110	3000	815	510	163	171	1201x640x625	760 / 1675	84
WRV204/145	3000	1095	700	220	233	1273x640x625	850 / 1874	84
WRV204/165	3000	1220	766	243	257	1314x640x625	887 / 1955	84
WRV204/193	3000	1340	861	273	290	1370x640x625	925 / 2039	84

For more information on Howden screw compressors, contact:

Howden Compressors Ltd, 133 Barfilan Drive, Glasgow G52 1BE, Scotland, United Kingdom
Tel: +44 (0) 141 885 7500 Fax: +44 (0) 141 882 8648 Email: hcd.sales@howden.com

Revolving Around You™

© Howden Group Limited. All rights reserved. 2014.
Howden and the Flying H logo are registered trade marks belonging to Howden Group Limited.

www.howden.com